

Eclipse RatioMatic

Burners

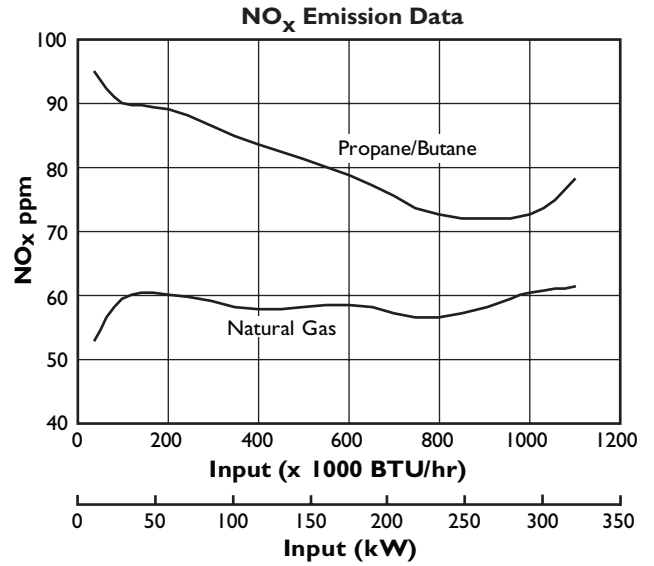
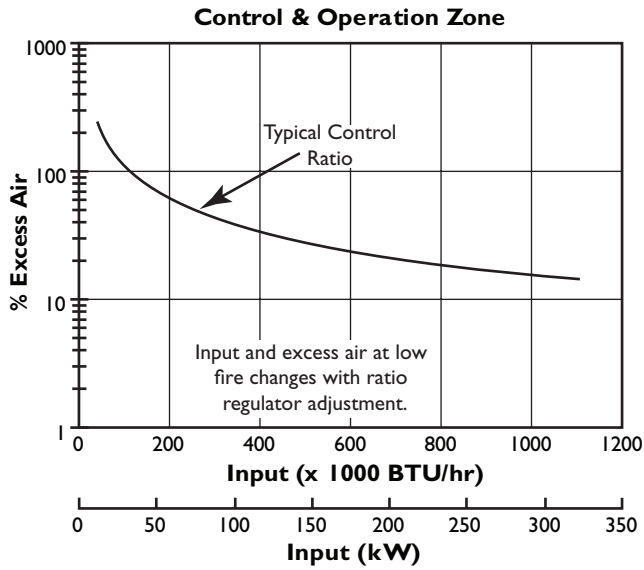
Model RM100
Version 3

Main Specifications - RM100

PARAMETER	SPECIFICATIONS					
Maximum input (Btu/hr) Note: Contact factory for varying chamber pressures or pressures outside the range: -2.0" to 2.0" w.c. (-5.0 to 5.0 mbar)	Frequency	BTU/hr	"w.c.	kW	mbar	
		60 Hz	1,295,000	-2.0	379	-5,0
	Packaged Blower		1,210,000	-1.0	354	-2,5
			1,120,000	0.0	328	0,0
			1,020,000	1.0	298	2,5
			915,000	2.0	268	5,0
			1,375,000	-2.0	403	-5,0
	50 Hz Packaged Blower		1,295,000	-1.0	379	-2,5
			1,210,000	0.0	354	0,0
			1,120,000	1.0	328	2,5
			1,020,000	2.0	298	5,0
	Minimum input		BTU/hr		kW	
	• with high turndown ratio regulator		30,000		9	
• with standard ratio regulator		40,000		12		
Main Gas Inlet Pressure		" w.c.		mbar		
• Fuel pressure at ratio regulator inlet		10 to 20		25 to 50		
High Fire Flame Length		inches		mm		
• Measured from the outlet end of the combustor	Natural gas	32		813		
	Propane / Butane	38		965		
Maximum Chamber Temperature		° F		° C		
	Alloy Tube	1500		820		
	SiC Tube	1900		1040		
Flame Detection	Flame rod or UV scanner					
Fuel	Natural gas, Propane, or Butane. For any other mixed gas, contact Eclipse for orifice sizing.					

- All information is based on laboratory testing. Different chamber size and conditions will effect the data.
- Maximum inputs are given for the standard combustion air blower without an air filter.
- All inputs based upon gross calorific values and standard conditions; 1 atmosphere, 70° F (21°C).
- Eclipse reserves the right to change the construction and/or configuration of our products at any time without being obliged to adjust earlier supplies accordingly.

Performance Graphs



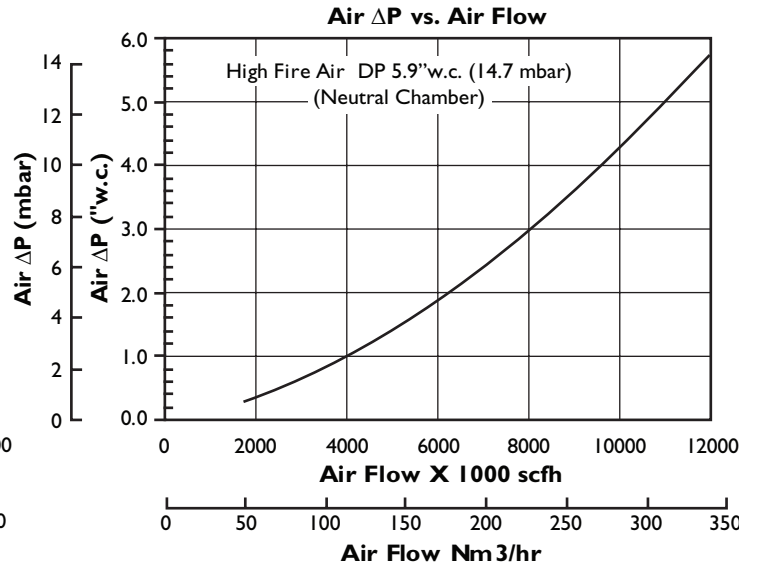
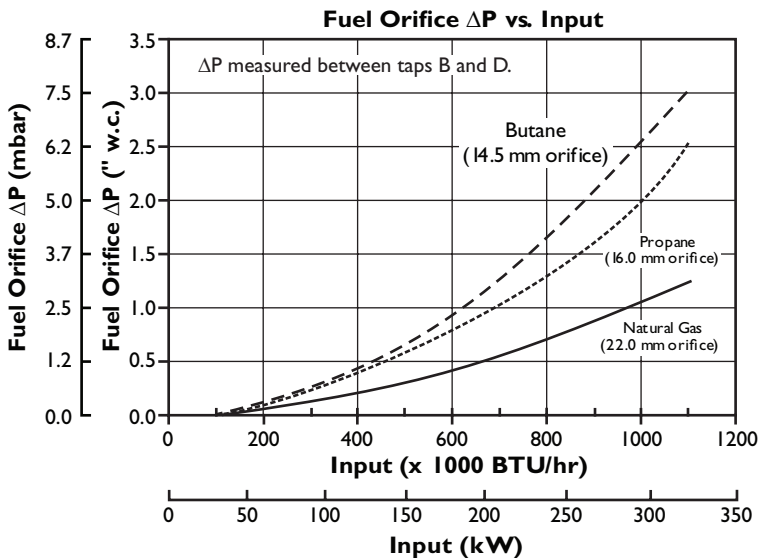
NO_x emission data is given for:

- Ambient combustion air ~70 F (20 C)
- Less than 700 F (370 C) firing chamber
- Minimal process air velocity
- Low fire input adjusted to 40,000 BTU/hr (12kW)
- ppm volume, dry @ 3% O₂
- Neutral chamber pressure

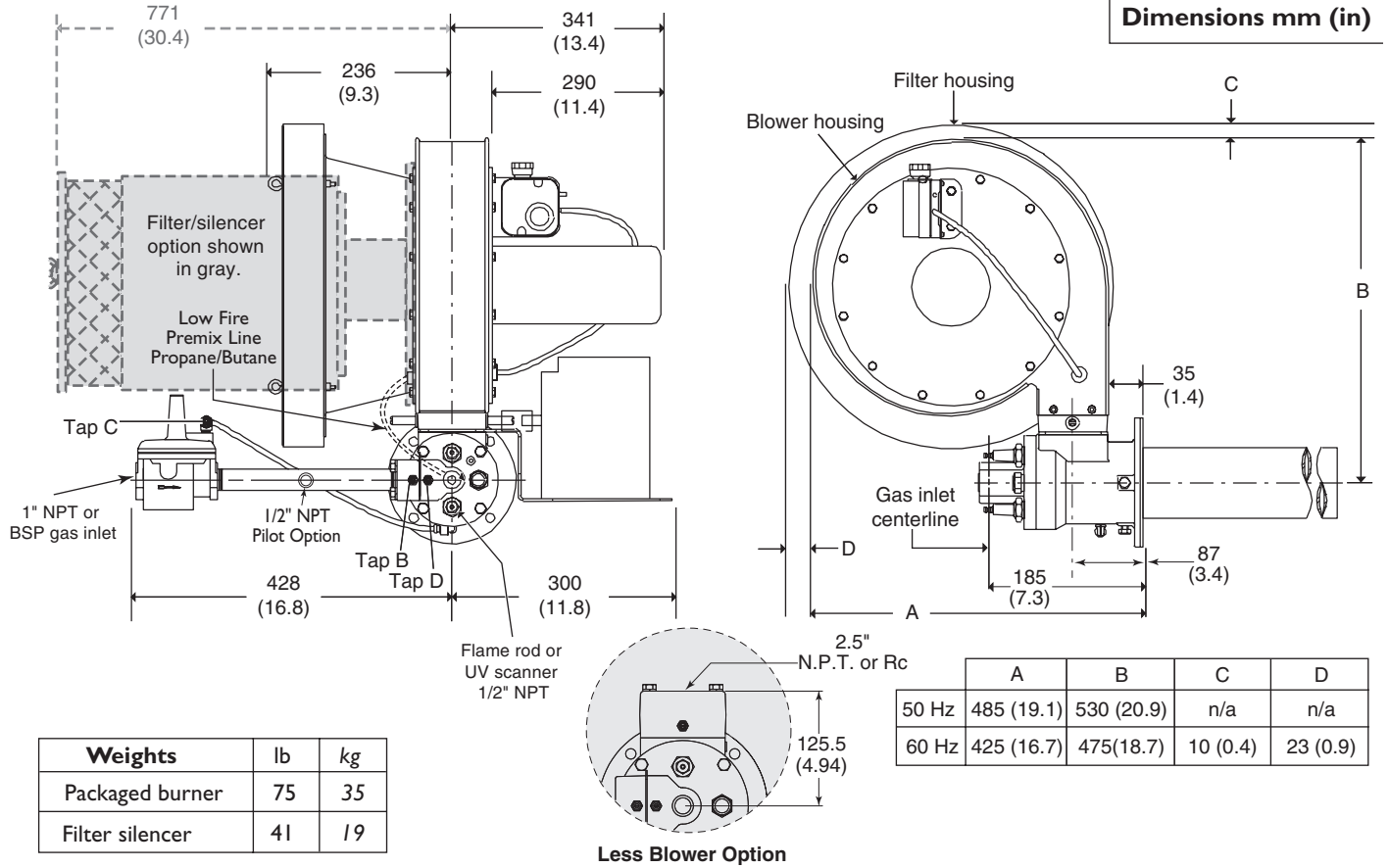
Emissions are influenced by:

- Chamber conditions
- Fuel type
- Firing rate
- Ratio regulator adjustment
- Combustion air temperature

CO emission is largely influenced by chamber conditions. Contact your local Eclipse Combustion representative for an estimate of CO emission on your application

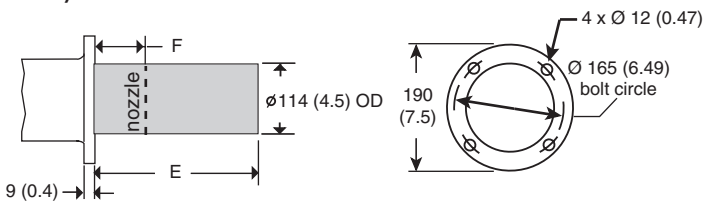


Dimensions & Specifications



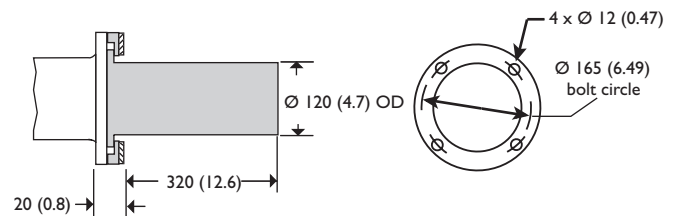
Combustor Types

Alloy tube

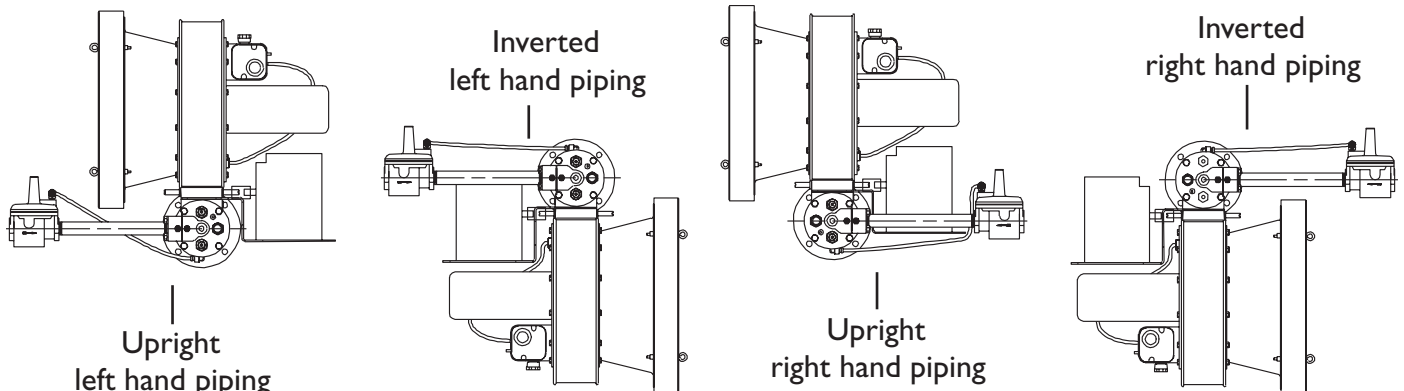


E	F
255 (10.0)	84 (3.3)
330 (13.0)	160 (6.3)
406 (16.0)	236 (9.3)

SiC tube



Burner Configuration





Offered By:

Power Equipment Company
2011 Williamsburg Road
Richmond, Virginia 23231
Phone (804) 236-3800
Fax (804) 236-3882

www.peconet.com